

## 6.27 Soft water connection and conversion to base water connection



### Information :

In areas with very hard water ( $> 18^{\circ}\text{dH}$ ) we recommend the use of a water softener. In an attempt to minimise the amount of softened (expensive) water and also then minimise the regeneration costs for the user, the unit should then be fitted with a separate soft water connection. The cooling and hand shower, additionally on OSP the demoisturizer operate with normal water and the conditioned water is only used for steam generator injection, -rinsing and if available automatic cleaning.



### Safety:

- The installation of a water softener should only be carried out with reference to the relevant local water installation regulations and to these instructions too.
- The installation instructions from the supplier and the operation maintains guidelines must be adhered to.
- The instructions on the water properties must also be observed after water softening.



### Notice:

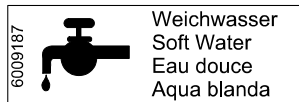
For the adaptation of the units to a soft water connection or base water connection on table-top units, the units are supplied with additional mounting point holes:

- With Table top units underneath on the base
- On the stand unit on the rear panel.

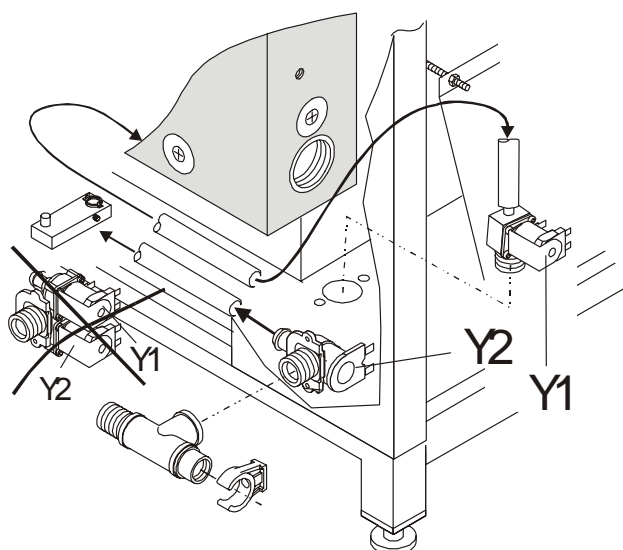


### Instruction – Assembly of soft water connection

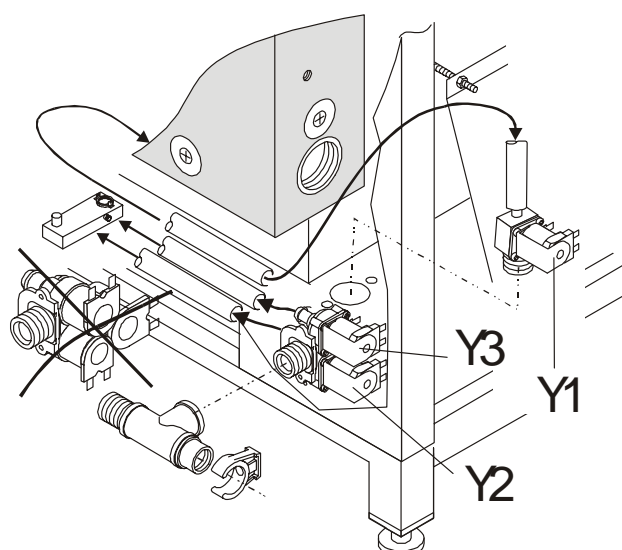
- On the table-top units remove the plastic cap from the additional hole in the unit base; With stand units remove the cover over the holes in the rear panel.
- On OSC double solenoid valve and on OSP triple solenoid valve dis- assembly (Attention: Mark connecting wire and hose for Y1, Y2 and possibly Y3!).
- On OSC assemble 2 single solenoid valves Part No. 5001058 into the existing holes in the unit back wall and the unit floor.
- On OSP single solenoid valve Part No. 5001058 assemble into the additional holes in the unit floor and assemble the double solenoid valve Part No. 5001056 into the unit back wall.
- Plug the marked water hoses onto the appropriate solenoid valves
  - Steam generator filling → Y1 / Cooling → Y2 / Demoisturizing → Y3 (only on OSP)
- Assemble marked connecting wires onto the appropriate solenoid valves.
- Apply label „Soft water“ Part-No. 6009187.



OSC



OSP





#### Information - Specification for the Softened water:

- Cold water connection of drinking water quality
- Minimum water pressure of 2 bar, max. pressure 6 bar
- Remaining hardness of softened water 5° ... 7° dH (9° ... 13° fH; 6,3° ... 8,8° eH; 90 ... 125 ppm (USA)).
- conductivity > 10 µS/cm



#### Information - Sizing of water softener with separate soft water connection:

Unit size	Recommended size of water softener
6.10	approx. 2300 Litre x 10°dH
10.10	approx. 2300 Litre x 10°dH
10.20	approx. 5600 Litre x 10°dH
20.10	approx. 5600 Litre x 10°dH
12.20	approx. 5600 Litre x 10°dH
20.20	approx. 5600 or 13400 Litre x 10°dH



#### Instruction – Conversion to base water connection (Only with table top units):

- Remove the plastic cap from the additional holes in the base of the unit.
- Remount the complete double solenoid valve (OSC) or triple solenoid valve (OSP) in the base of the unit and refit using the two screws.